

Setting the scene for SMARTA-NET next meeting

Rural sensitive SUMP's in the spotlight



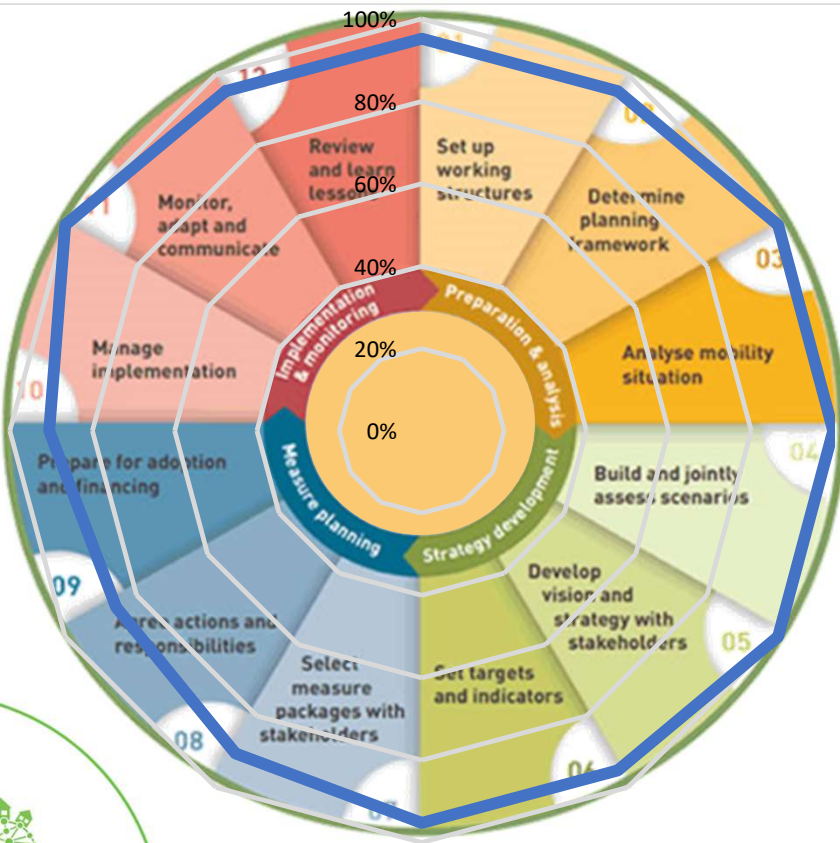
André Freitas & Luciana Pereira

12/10/2023

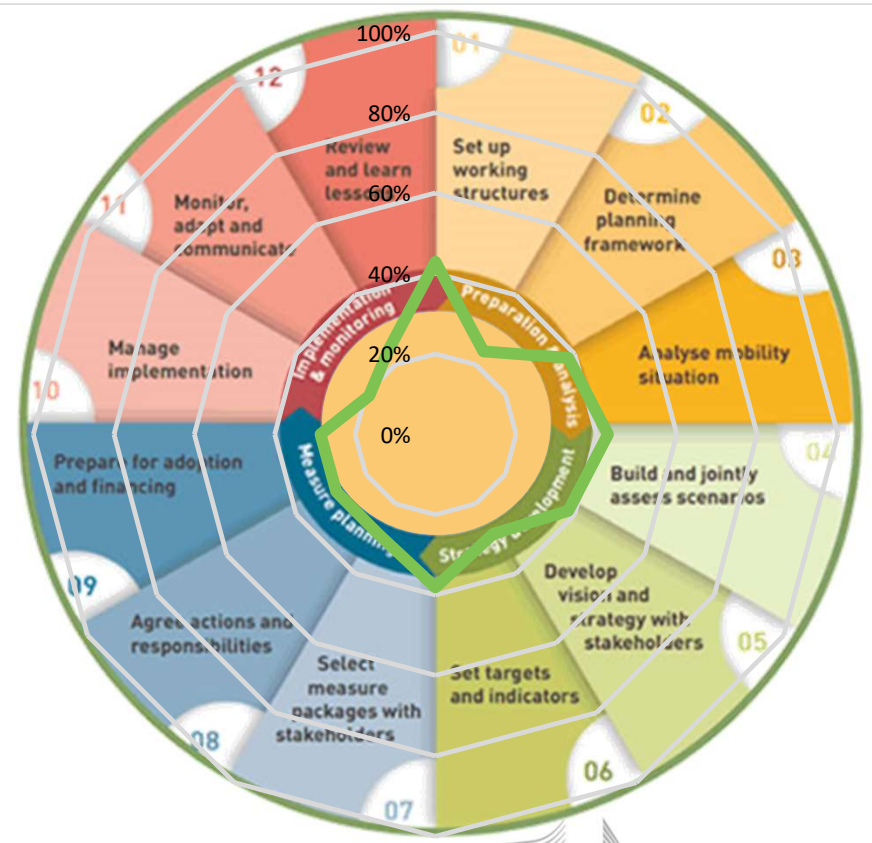


Rural sensitive SUMP's on the spotlight

Importance of rural mainstreaming



Effectiveness of local SUMP



Setting the scene for SMARTA-NET next meeting

- Our next meeting will be held online and take place on the 31st of January
- We anticipate to meet in one single morning
- Who is the meeting for:
 - Representatives from local authorities, including those who are normally set apart from planning processes
 - Representatives of rural communities and associations representing them
 - Tourism networks or associations, who may voice their concerns and help shaping transport planning processes
- Discussion points will involve:
 - Presentation of the Guidelines on the development of rural-sensitive SUMP and seek to validate the document through continuous exchanges
 - Presentation of good practice examples of cities that have taken into consideration the rural-hinterland in the SUMP development
 - Presentation of cities that have overlooked rural/urban transport flows and may provide testimonials of the consequences



Vox Pop

www.menti.com

Code: 6427 6641





Log in to your Mentimeter account

Seamlessly integrate your Mentimeter slides with your PowerPoint presentation to turn meetings, workshops, training, conferences or classes into interactive experiences that are fun for both you and your participants.

 Log in with Google

 Log in with Facebook

 Log in with Microsoft

or using email

Your email address

Your password



Log in

[Log in with SSO](#)

[Sign up](#)

Don't have an account yet?
[Sign up at mentimeter.com](#)

