

Policy perspective on rural mobility and tourism from the Rhineland Palatinate (RP) Federal State



Rheinland-Pfalz

MINISTERIUM FÜR
WIRTSCHAFT, VERKEHR,
LANDWIRTSCHAFT
UND WEINBAU

My Topics:

- RP at a glance
- Issues of Rural mobility
- Issues of Touristic mobility
- Some Solutions

My name: Reiner Dölger, unit for Technology, innovation, sustainability and digitization

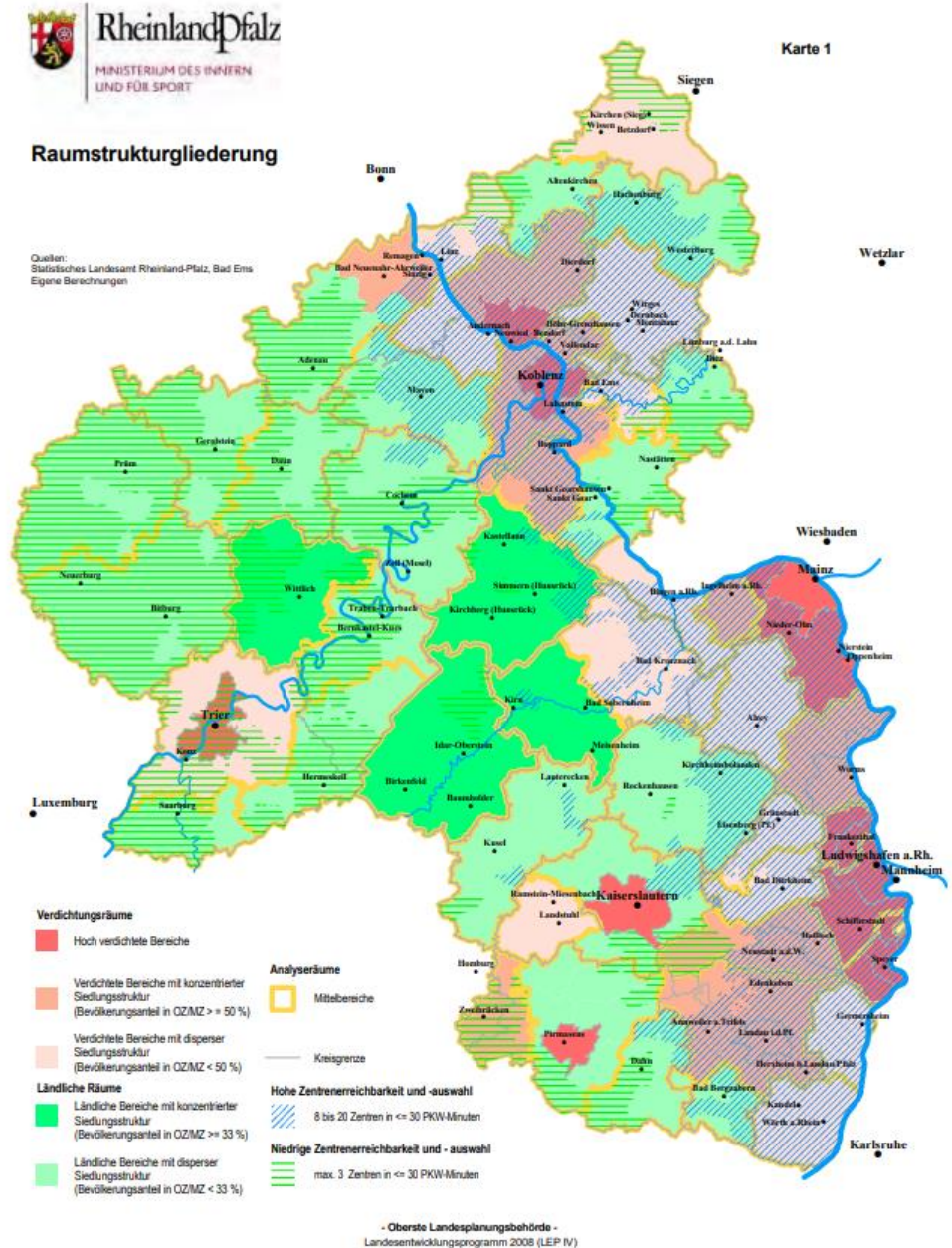


RP at a glance

- 4 m. people on 18 k sq km: 5% of Germany, 1% of EU
- Biggest City: 230.000 pop.
- Important cross border traffic, also international: need to cooperate
- Rural areas from remote to urbanised
- Important industry: Chemical, trucks, machinery
- Wine growing regions are the highly attractive for tourists, RP covers 2/3 of German wine production
- Large rivers, also important for tourism

RP at a glance

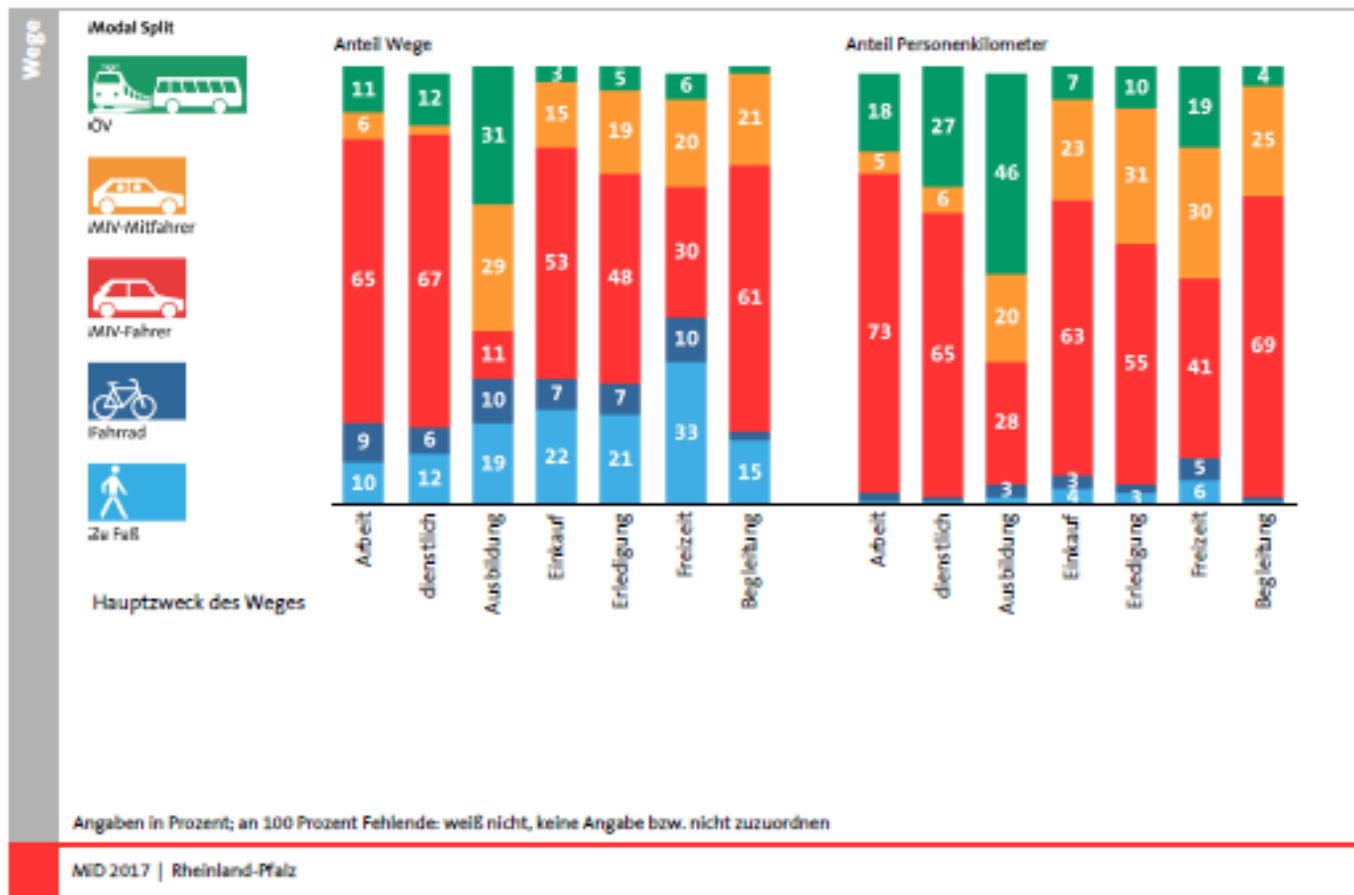
- Urbanised areas along the rhine and patchy in the west
- Rural areas with industry, some of which have undergone restructuring (garment, shoe industry or pottery)
- But still successful, innovative companies in all parts of RP



Modal Choice, 2017, taken from the national mobility survey



Abbildung 42 Hauptverkehrsmittel nach Wegezweck



Observations and needs for mobility in rural areas

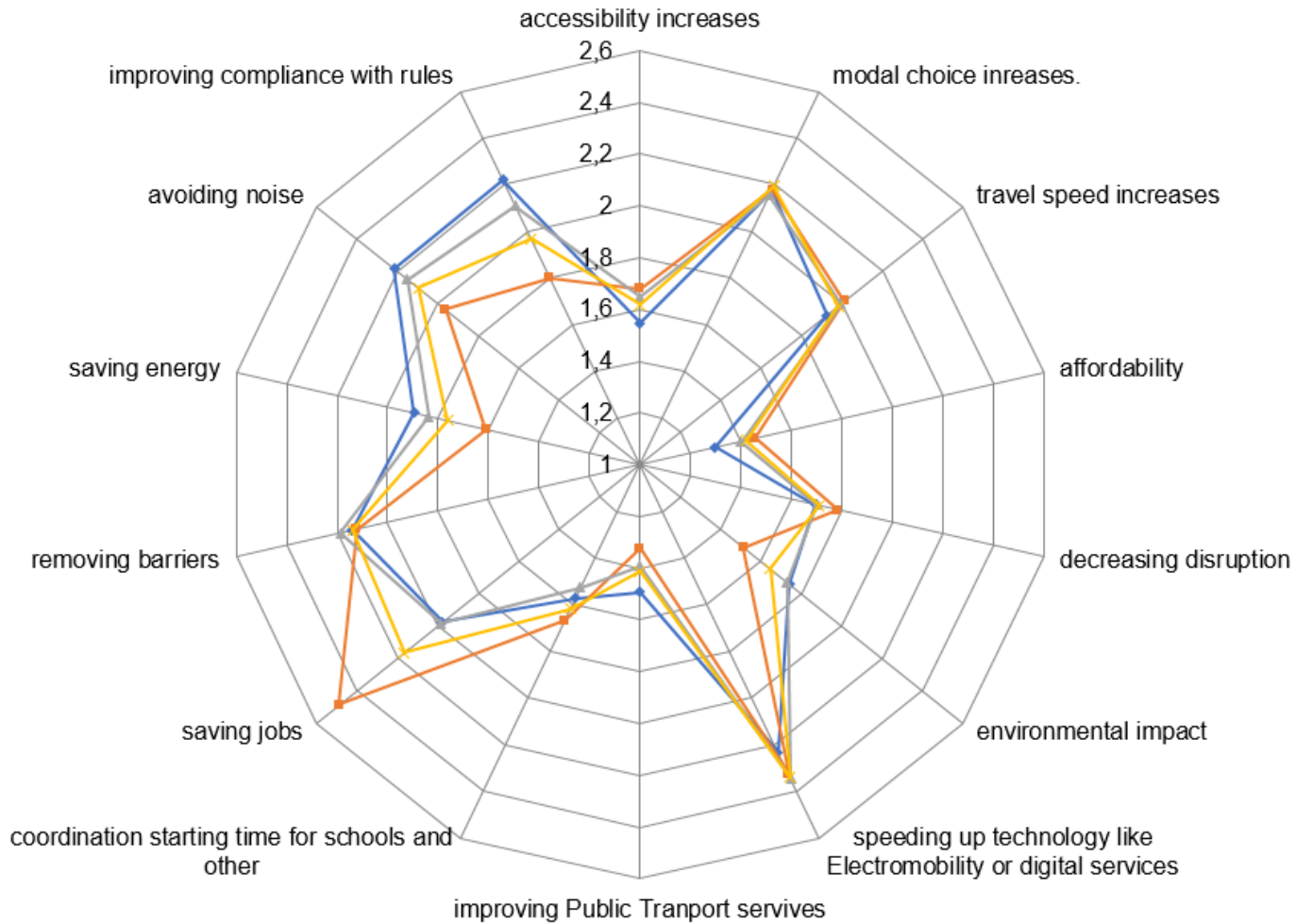


- Public transport used to be very limited until the mid 90s. After an increase in train number by 40%, the passenger numbers followed suit. However car usage remains largely unchanged
- Cycling usage hovered around 5-7% regionwide, very low in hilly areas, but this is changing with the electric bike
- In 2019 an online citizen forum was organised to learn about the needs for mobility and people's expectations
- Very good response: 7,000 people responded, of which 2,000 contributed written personal views

Survey Results 2019



Rheinland-Pfalz shall deal with,...



1: exactly true, 2: somewhat true, 3 not true

—◆— Remote Rural areas
 —■— Larger Cities
 —▲— Urbanised rural areas
 —✦— Commuter Belt



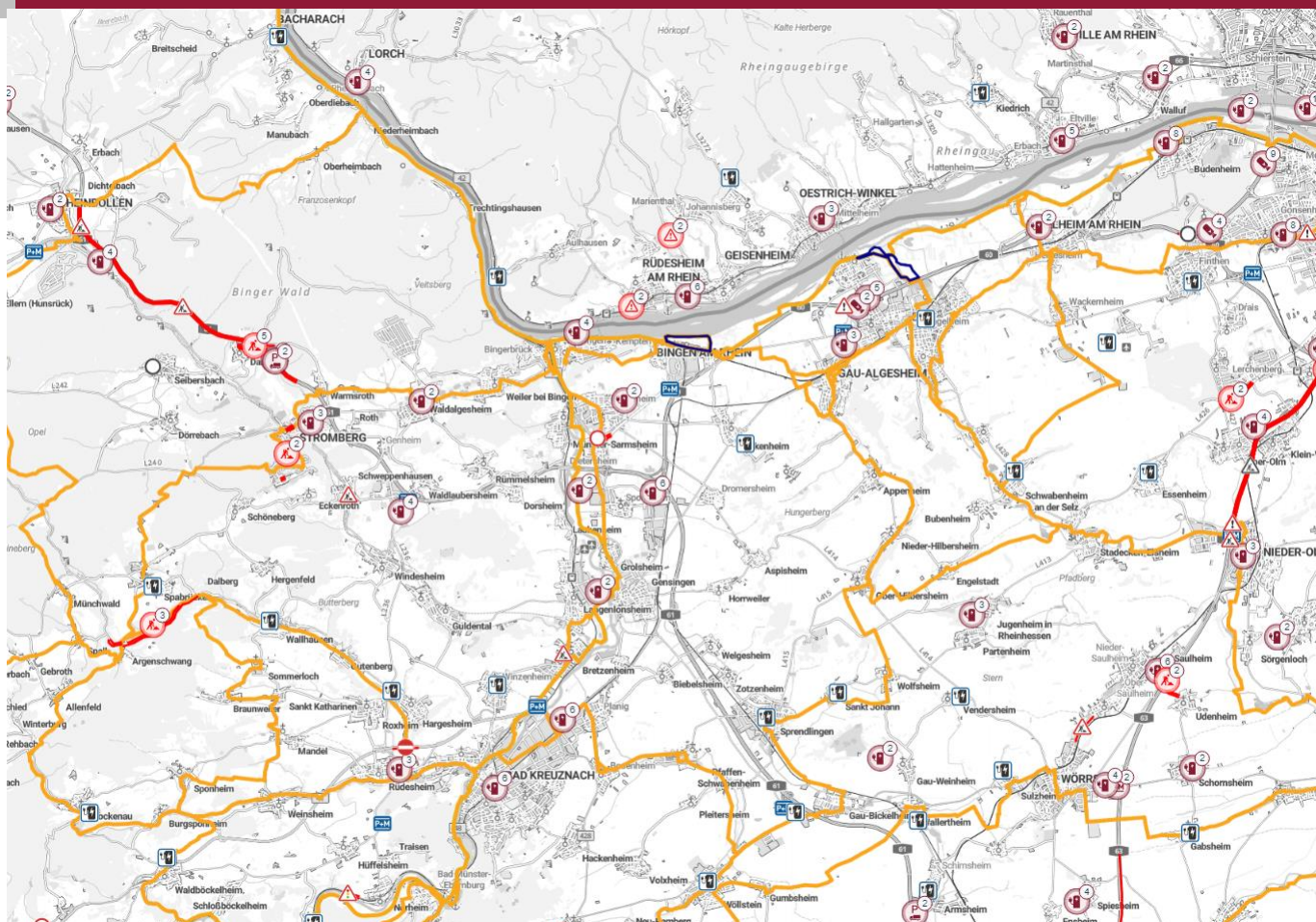
Touristic mobility - Observations

- 40% of Germans undertake cycling trips and 6% cycling journeys
- 40% of cycling journeys are combined with train or bus transport
- Signposting is still very much used for orientation, but smartphones increasingly so
- Digital network information in real-time will be crucial for a safe, comfortable and attractive trip

- The Deutschland-Ticket (49 €/ month for all regional trains and busses in Germany) has increased train journeys for leisure
- On some sections capacity is exceeded
- scenic sections or far running trains are concerned most



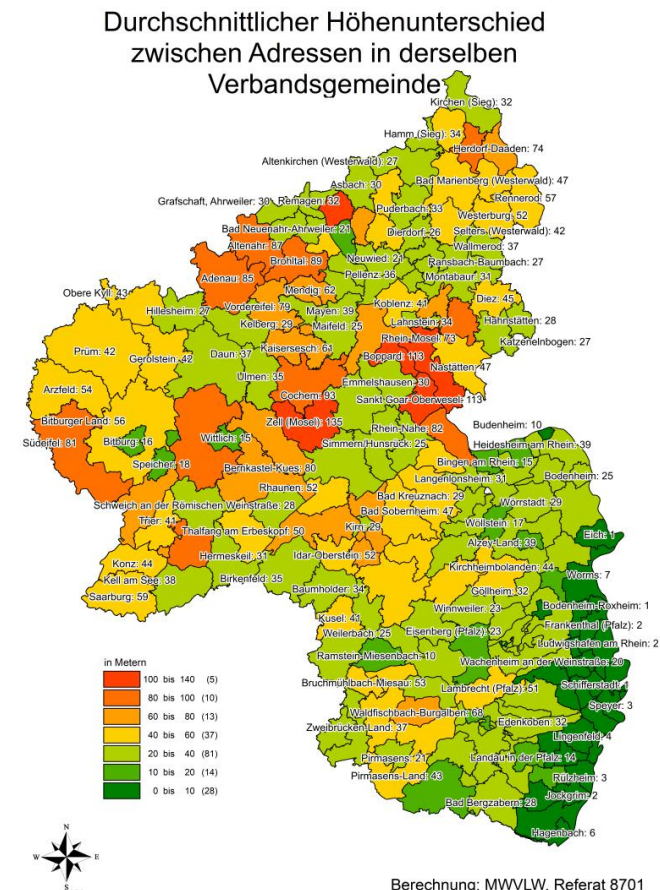
Cycling network around Bingen





Some Solutions: E-Bikes

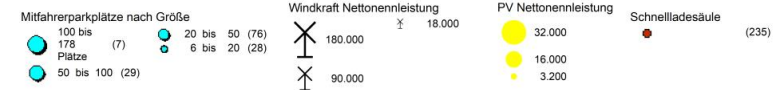
- Most areas in Rheinland-Pfalz are hilly at least (see right)
- Since 2018 the share of Electric bikes of the total bike market has climbed to 60%
- About 100.000 E-bikes are sold per year, representing an invest of 250 mio. €
- There are now bike teams in all 8 regional road agency offices of RP, working on improving the infrastructure
- Bike usage is supposed to double by 2030



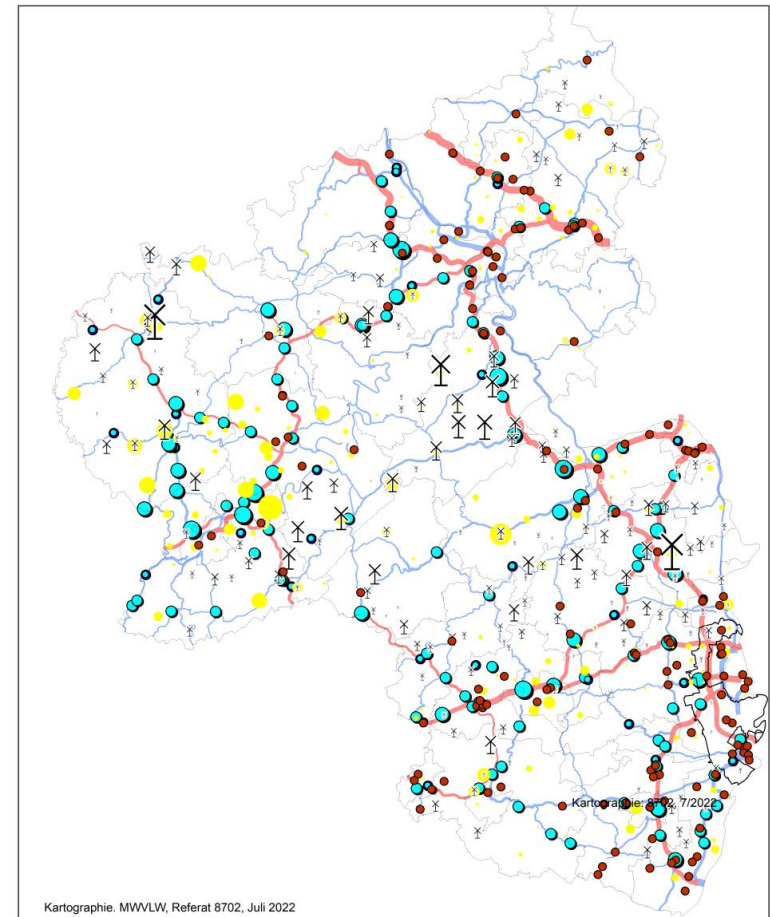


Some Solutions: Ride Sharing

MFP und regenerative Energien



- There are more than 150 ride sharing areas (light blue dots)
- They can be developed to become ride sharing hubs, with improved access on bus or bike
- Charging infrastructure could be placed, connecting these areas to the power grid
- Many areas are close to sources of renewable energy (wind and sun)
- Ride sharing areas could thus contribute to the energy transition

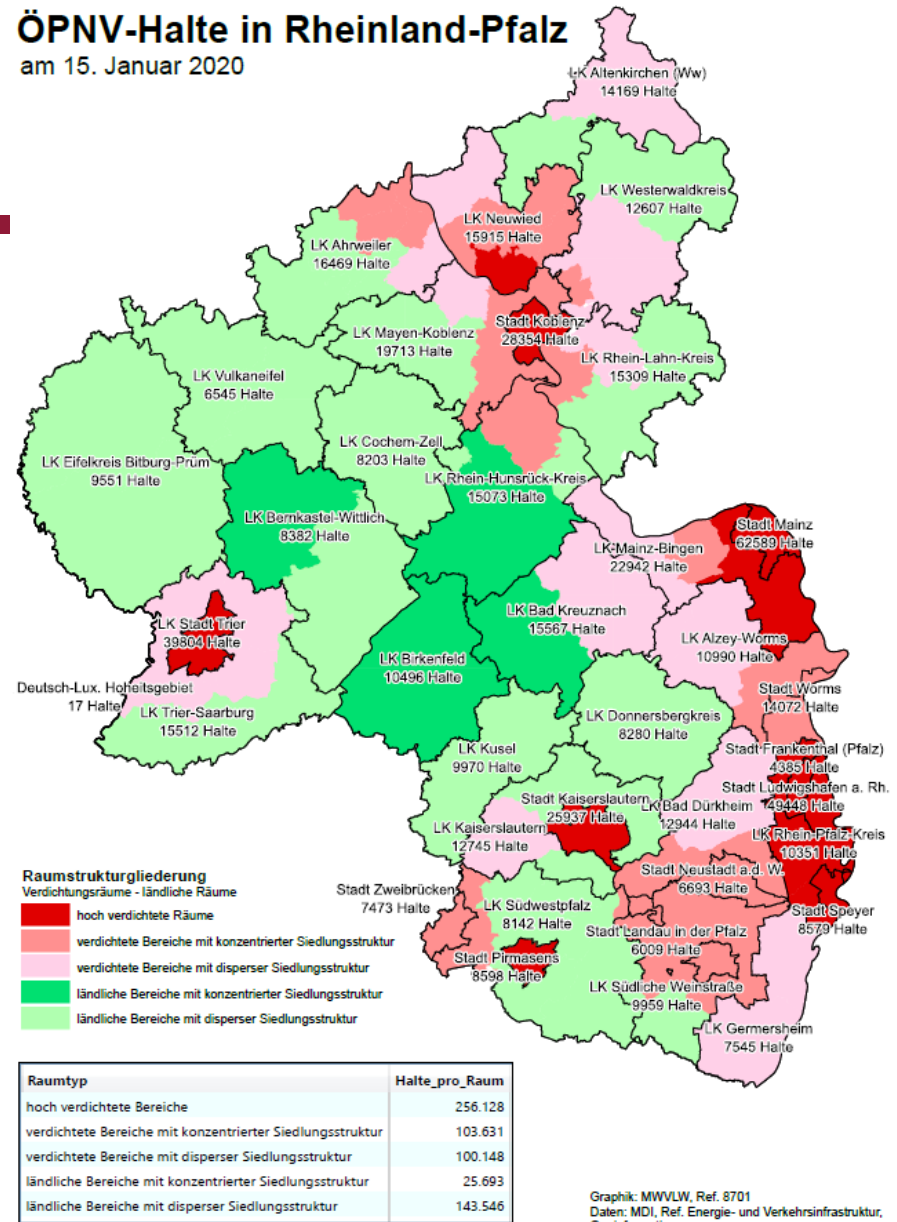


Some Solutions: Improving Public transport

- PT in rural areas is very limited
- The new PT-Scheme will improve the situation
- Electronic information renders PT visible
- Most stations have been upgraded and up to 40% more customers are recorded
- However the offer is still compromised by lack of drivers and insufficient infrastructure

ÖPNV-Halte in Rheinland-Pfalz

am 15. Januar 2020



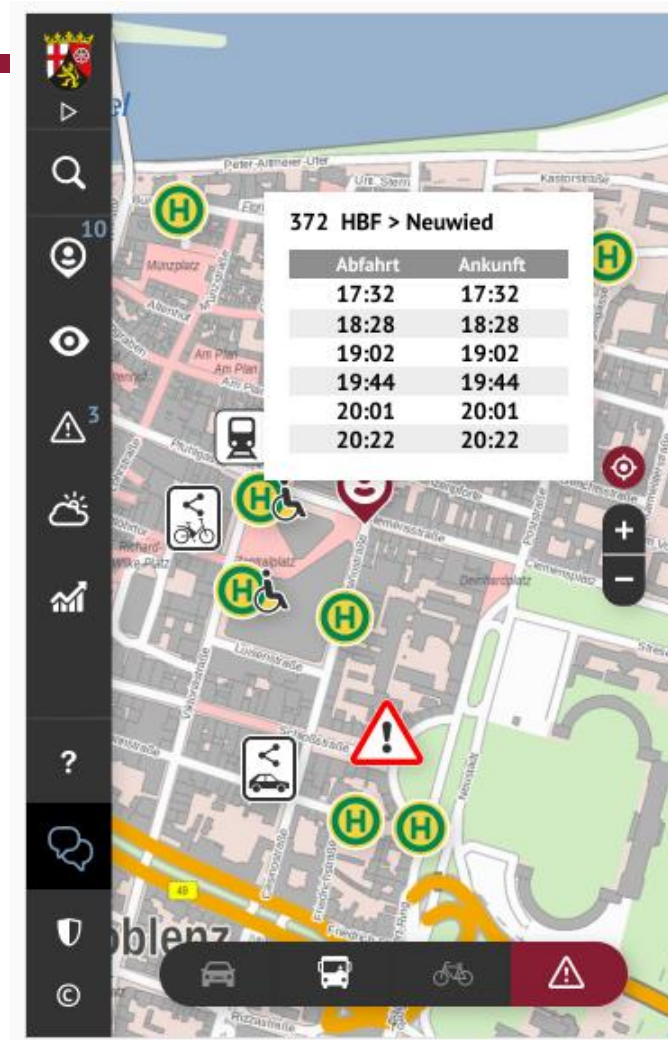


Some Solutions: Digitization and more

- Car sharing, ride sharing, delivery can profit from digital services
- Broadband access can help avoiding trips altogether: Even before Corona 18% of employees in RP practiced Home-Office in some form
- Automated or autonomous Public Transport is considered to be relevant from 2030 onwards
- Nuisance caused by trucks or motorcycles, especially felt in some rural areas, could be reduced by electrification
- ...



Find alle kind of information on traffcinfrastructure at verkehr.rlp.de





We hope you will have a successful meeting in
Bingen!